



Sheer
Driving Pleasure



THE M5



THE BMW M5.



DIGITAL DISCOVERY: THE NEW BMW BROCHURES APP.



More information, more driving pleasure: The new BMW brochures app offers you a brand new digital and interactive BMW experience. Download the BMW brochures app for your smartphone or tablet now and explore new perspectives of your BMW.

INNOVATION AND TECHNOLOGY.



18 M powertrain and M suspension



22 Driver assistance and safety



24 Connectivity and infotainment.

EQUIPMENT.



26 BMW M5



28 BMW M5 Competition



30 BMW Individual



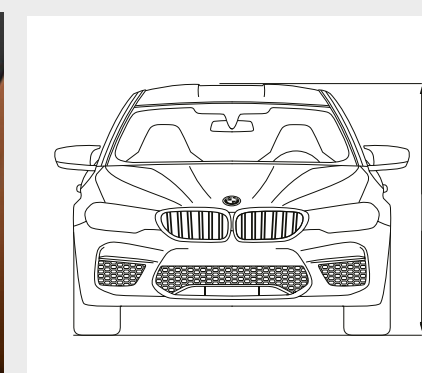
32 Additional equipment



38 Exterior colours



40 Interior colours



42 Technical data



FORMULA M.



WELCOME TO THE HIGH-TECH INDUSTRY.

ALL BMW 5 SERIES DRIVER ASSISTANCE SYSTEMS,
INCL. DRIVING ASSISTANT PLUS^{1,2} /// M SPECIFIC
HEAD-UP DISPLAY³ /// M SERVOTRONIC FOR DIRECT
AND PRECISE STEERING /// GEAR SELECTOR
SWITCH WITH DRIVELOGIC ROCKER



¹ Available as optional equipment.

² Function may be limited in darkness, fog or bright glare.

³ The visuals in the BMW Head-Up Display are not fully visible when viewed through polarised sunglasses. Functionality shown is dependent on equipment. Further optional equipment is required for the display.



BOUNDLESS DRIVING PLEASURE.

M TWIN POWER TURBO 8-CYLINDER PETROL ENGINE
WITH 750 NM AND 441 KW (600 HP) /// M xDRIVE WITH
ACTIVE M DIFFERENTIAL /// 8-SPEED M STEPTRONIC
TRANSMISSION WITH DRIVELOGIC /// LOWER WEIGHT
THANKS TO INTELLIGENT LIGHTWEIGHT CONSTRUCTION



PACKED WITH POWER
UP TO THE
CARBON ROOF.

CARBON ROOF AND M5 BONNET WITH SCULPTED
CONTOURS /// AERODYNAMICALLY SHAPED M WING
MIRRORS /// WIDENED BODY WITH M-SPECIFIC GILLS



LIFE IN THE FAST LANE.

SPECIFIC M REAR DIFFUSER ///
M REAR SPOILER /// FOUR TYPICAL
M TAILPIPES WITH CHROME TRIM



RESERVE YOUR SPOT AT THE TOP.

FULLY ELECTRIC M MULTIFUNCTION SEATS*
WITH FULL 'MERINO' LEATHER UPHOLSTERY* AND
ILLUMINATED M5 BADGE IN THE HEADRESTS ///
M LEATHER STEERING WHEEL WITH SHIFT
PADDLES AND M1/M2 BUTTONS

* Available as optional equipment.



A CAR THAT'S GOT IT ALL. EXCEPT FOR COMPETITION.

SPORTS CAR OR EXECUTIVE SALOON? BOTH, ACTUALLY. WHEN ULTIMATE POWER IS PRESENTED WITH SUCH STYLE, THE ASSURED OUTCOME IS VICTORY. WITH 460 KW (625 PS) THE BMW M5 COMPETITION IS STRONGER THAN EVER, AND THAT WITH FULL EVERYDAY SUITABILITY. EQUIPPED FOR THE FIRST TIME WITH M xDRIVE, ITS DYNAMIC PERFORMANCE, AGILITY AND TRACTION ARE ENHANCED EVEN FURTHER – FOR A NEW LEVEL OF DRIVING PLEASURE. ONLY WHEN NOTHING CAN BE ADDED OR TAKEN AWAY CAN THE RESULT BE CONSIDERED THE ULTIMATE DRIVING MACHINE WORTHY OF THE LETTER M. GET IN, START THE ENGINE AND EXPERIENCE THE NEXT LEVEL OF EXHILARATION. **WELCOME TO THE BMW M5 SALOON.**





A passion for motor racing, driven by perfection: BMW M automobiles provide a level of dynamic performance, precision and power that meets the highest requirements. The M TwinPower Turbo engines aren't standard engines tuned for higher power output, but specially developed powerplants that bring motorsport technology to the road. All other components are likewise perfectly tailored to the overall concept. Everything from the suspension to the transmission, steering and brakes is designed for one purpose only: to deliver maximum performance, whatever the challenge.

M TwinPower Turbo 8-cylinder petrol engine in the BMW M5

- Max. output: 441 kW (600 hp)
- Max. torque: 750 Nm
- Acceleration 0–100 km/h: 3.4 s
- Top speed: 250 km/h / 305 km/h with M Driver's package¹
- Combined fuel consumption: 10.5–10.6 l/100 km
- Combined CO₂ emissions: 238–241 g/km

M TwinPower Turbo 8-cylinder petrol engine in the BMW M5 Competition

- Max. output: 460 kW (625 hp)
- Max. torque: 750 Nm
- Acceleration 0–100 km/h: 3.3 s
- Top speed: 250 km/h / 305 km/h with M Driver's package¹
- Combined fuel consumption: 10.5–10.6 l/100 km
- Combined CO₂ emissions: 238–241 g/km

The **M sports exhaust system**¹ delivers a dynamic sound that can be modified via the integrated exhaust valve mechanism. The SPORT and SPORT+ programmes, which can be selected via the Driving dynamics buttons, are accentuated by an even more intense engine sound, while the comfort-oriented programme prioritises more discreet engine acoustics.

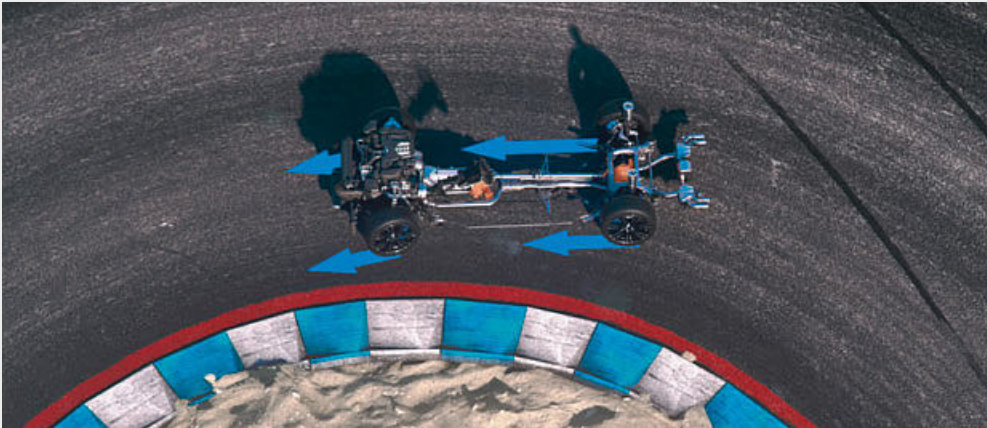
The **M sound control** buttons in the centre console allow the athletic engine sound and robust tailpipe noise to be adjusted inside the vehicle. Depending on the driver's preference, the engine's linear power development and tremendous thrust can be showcased in their best light, or the noise level can be discreetly subdued.



The **M xDrive with Active M differential** guarantees maximum traction and dynamic performance, both in everyday driving and on the racetrack. Depending on personal preference or track conditions, the driver can choose between the 4WD, 4WD Sport and 2WD drive variants.



In **4WD mode**, the M xDrive has a set-up focused on optimum control and superior traction. This is particularly useful when road conditions are poor. At the same time, this mode enables drivers to explore the dynamic potential of the BMW M5 with the stability control system switched off.



In **4WD Sport mode**, the M xDrive set-up is adjusted for increased agility and sporting ability. The combination of absolute precision, effortless handling and convincing traction ensures maximum driving enjoyment – especially on a race track.



In **2WD mode**, the BMW M5 enables driving enthusiasts to savour the purist enjoyment of a rear-wheel drive high-performance saloon, with the Active M differential ensuring supremely agile handling and outstandingly precise control.

¹ Available as optional equipment.

Further information on fuel consumption and CO₂ emissions can be found in technical data or consult your local BMW partner.

M POWERTRAIN AND M SUSPENSION.



Every BMW M development project begins with one aim: delivering outstanding dynamic ability. Every single component within the M5 suspension is designed for maximum performance, to ensure optimal road contact even when pushing the car to its limits. Aerodynamics optimisation, lightweight construction and other BMW M technologies raise the vehicle's level of performance even further.

M5 suspension.

The fundamentally revised M5 suspension fully highlights the vehicle's enormous dynamic potential. The vehicle features a wider front track, adjusted springs and harder stabilisers as well as a unique calibration of the Variable Damper Control, all of which work together to provide a distinctly athletic driving style.

The **M Carbon ceramic brake**^{1, 2} delivers braking power more directly. It is non-corrosive, very resistant to abrasion, tolerates more heat and contributes to a lower vehicle weight, which has a positive impact on agility, dynamics and acceleration. Matt Gold-coloured brake callipers with the M designation make this special technical equipment visible from outside the car.



Configurable setups M1 and M2 allow you to save individual driving dynamics settings.

Two individual driving dynamics configurations can be stored in the BMW M5. Saving a set-up is easy and intuitive: to save the current setting, drivers simply have to press and hold down the M1 or M2 button on the steering wheel; alternatively, they can configure a set-up via the BMW iDrive menu. The M1/M2 buttons on the steering wheel are also used to access a saved set-up. The selected mode – M1 or M2 – is displayed on the instrument panel.

Configuration options.

- M xDrive: new for the BMW M5, with 4WD, 4WD Sport and 2WD modes
 - 8-speed M Steptronic transmission with Drivelogic: shift mode (D or S) and shift programs (level 1, 2 and 3)
 - M TwinPower Turbo engine: response – Efficient, Sport or Sport+
 - M Servotronic: servo boost – COMFORT, SPORT or SPORT+
 - M suspension: response – COMFORT, SPORT or SPORT+
 - Dynamic Stability Control (DSC): modes – DSC ON, MDM (M Dynamic Mode) or DSC OFF
- Drivers can also adjust the display mode of the BMW M specific Head-Up Display



The **8-speed M Steptronic transmission with Drivelogic** features extremely short shifting times and numerous shifting options: from very athletic and dynamic to comfortable and fuel-efficient. The gears can also be shifted manually with the gear lever, or via gearshift paddles on the steering wheel.

¹ Available as optional equipment.
² Depending on conditions and usage, features specific to the materials used can lead to operational noises, particularly in wet conditions, just before the vehicle comes to a halt.

DRIVER ASSISTANCE AND SAFETY.

■ Standard equipment □ Optional equipment



Challenging the laws of physics is part of BMW M automobiles’ DNA. This always includes a maximum amount of safety as well – because power is useless if it can’t be controlled. This is why BMW M includes anticipatory technologies that support the driver to combine unlimited driving enjoyment with the highest degree of safety. A wealth of intelligent safety measures are in place to ensure that you always feel protected on the road, even when approaching the car’s limits.

■ The **Adaptive LED headlights** include BMW Selective Beam, cornering lights and adaptive headlights. The light colour is similar to daylight and provides an ideal, even illumination of the road to improve visibility and make driving in the dark less tiring. The iconic light design with four light elements makes the vehicle recognisable as a BMW even at night.



■ The full-colour **BMW Head-Up Display with M specific functions¹** projects all information relevant for the journey directly into the driver’s field of vision. With the press of a button, the driver can switch to the M specific display, which includes a gear indicator, the rpm as a dynamic range curve with shift lights indicating the optimal moment to shift as well as navigation tips.



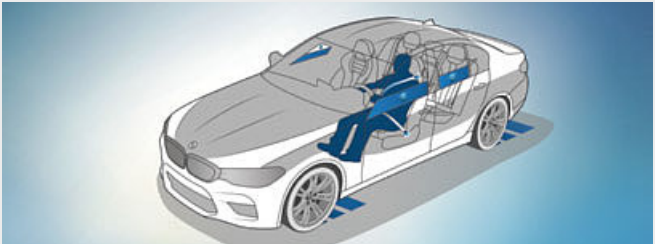
□ The equipment package **Parking Assistant Plus** makes parking and manoeuvring the vehicle easier. It features Surround View including Top View, Remote 3D View, PDC as well as a lateral parking aid, the Active PDC emergency braking function and the Parking Assistant with linear guidance that provides fully automatic parking both parallel and perpendicular to the road.



□ **Driving Assistant Plus²** offers greater comfort and security during monotonous or complex driving situations. These can include traffic jams, stop-and-go traffic or long journeys through the city, on country roads or motorways, along with navigating junctions and lane changes.



□ **BMW Night Vision with person recognition*** makes people and large animals visible on the Control Display from a distance using heat imaging and illuminates them with the Dynamic Marker Light in the main headlight. An additional warning system is also automatically activated when the vehicle is started, regardless of the status of the imaging display.



□ **Active Protection** is the BMW ConnectedDrive preventive passenger protection system. Active Protection warns the driver if it detects signs of tiredness, safety belts are pretensioned in critical situations, electric seats are returned to upright positions and the windows and sliding roof, if featured, are closed. After an accident occurs, the brakes are automatically applied until the car reaches a standstill.

The Standard and Optional equipment may differ between countries. Please consult your local BMW partner for more information.

Some ConnectedDrive Services may differ between countries. Please consult your local BMW partner for more information.

¹ The visuals in the BMW Head-Up Display are not fully visible when viewed through polarised sunglasses. Functionality shown is dependent on equipment. Further optional equipment is required for the display.
² Function may be limited in darkness, fog or bright glare.

*The availability of some equipment features and functions depends on engine variants or additional options. The market and production availability may vary. You can find detailed information about terms, standard and optional equipment at www.bmw.com or from your BMW Partner.

BMW Personal CoPilot. By your side, when you decide.

THE INNOVATIVE BMW ASSISTANCE SYSTEMS.

Enjoy the ultimate in comfort and safety with the BMW Personal CoPilot. Whether it's for driving or parking, you can rely on BMW Personal CoPilot driver assistance systems in every situation. The most cutting-edge systems, such as radar, ultrasound and cameras, dependably register the vehicle's surroundings, forming the basis for intelligent driver assistance systems. Either activated when desired, or as emergency assistance in the background – BMW Personal CoPilot assistance systems make every journey in your BMW even safer and more enjoyable.

CLOSER TO AUTONOMOUS DRIVING THAN EVER BEFORE.

Autonomous driving is not a utopia, it is the future: All over the world, BMW Personal CoPilot test vehicles are already driving completely independently without the driver's intervention and not only show impressively how mobility will change in the near future – they also offer an outlook on the next level of driving pleasure. Even today, BMW Personal CoPilot assistants already offer a large number of intelligent semi-automated systems that actively support and relieve the driver in almost every driving situation.

SIMPLY PARK IT.

Intelligent parking assistance systems from BMW Personal CoPilot are available so that you don't just look forward to every ride in your BMW, but also to parking. For example, the Parking assistant already displays suitable parking spaces as you drive past and, depending on the BMW model, runs the parking process either partially or completely independently. But here too, automation will continue to advance, so that in the future it will be possible for vehicles without drivers to search for a parking space and execute the parking process autonomously.

DRIVING ASSISTANT PLUS.

Driving Assistant Plus¹ offers greater comfort and security during monotonous or complex driving situations. These can include traffic jams, stop-and-go traffic or long journeys through the city, on country roads or motorways, along with navigating junctions and lane changes.

PARKING ASSISTANT PLUS.

The equipment package Parking Assistant Plus¹ makes parking and manoeuvring the vehicle easier. It features Surround View including Top View, Remote 3D View, PDC as well as a lateral parking aid, the Active PDC emergency braking function and the Parking Assistant with linear guidance that provides fully automatic parking both parallel and perpendicular to the road.

ACTIVE CRUISE CONTROL WITH STOP&GO FUNCTION.

Active cruise control with Stop&Go function¹, Speed Limit Info including No-overtaking indicator and Approach control warning with braking function reacts to stationary vehicles, independently maintains a preselected distance from the vehicle ahead and controls speed down to standstill, automatically accelerating again as soon as traffic flow allows it.

IN THE BMW M5 SALOON.

The key visual for BMW Personal CoPilot shown here is an exemplary, artistic representation, which can deviate from the design and equipment of the BMW model described in this medium.

¹ Available as optional equipment.

² The information in the BMW Head-Up Display is not fully visible when viewed through polarised sunglasses. Content shown will depend on the equipment options chosen. Further optional equipment is required to display specific items.

BMW ConnectedDrive Connected to be free.

Innovation and Technology 24 | 25

CONNECTED FOR OVER 20 YEARS.

Focused on the future – from the very beginning. By the 1990s, BMW had already made headway in connected mobility. Another milestone of the digital future was surpassed in 2004: vehicles with built-in SIM cards. Then came the first online functionality, Google Services and innovative display systems such as the BMW Head-Up Display. Throughout this process, the desires of the customer have always taken centre stage. In a first for a premium automobile manufacturer, BMW makes it possible to book and pay for services flexibly via the BMW ConnectedDrive Store, in the vehicle or on a computer at home. And with the introduction of BMW Connected, the Open Mobility Cloud and the BMW Intelligent Personal Assistant, BMW is taking the next steps into the future of mobility.

MORE THAN 20 SERVICES IN THE BMW CONNECTED DRIVE STORE.

ConnectedDrive open the gate to the digital world of BMW. Use vehicle apps such as news, weather, office or online search on the go and be well informed at all times. Via the ConnectedDrive Store or directly in your BMW, you can book additional digital services such as Connected Music or Concierge Service – anytime, anywhere, easily and flexibly.

IN TOUCH 24/7, WITH BMW CONNECTED.

Are the doors of my car really locked, when should I leave my office to arrive in time for dinner at the fancy Italian restaurant and how will I find my way there? As your personal mobility assistant, the BMW Connected App can easily help you with all these questions. It connects you directly with your car, giving you access before and during your trip to numerous functions, which make every drive simpler and more comfortable.

BMW M LAPTIMER APP.

Using the BMW M Laptimer app¹, driving data from the racetrack can be recorded accurately and then analysed. The recorded information can be shared as a snapshot on social media while the data, including accelerator position, steering angle, G-force and best lap time, can be sent by email. A GoPro interface is also incorporated.

BMW CONNECTED.

Connect with your BMW. The BMW Connected* app is your digital mobility assistant which takes care of your needs before and during your journey. Access your car using your smartphone, smartwatch*, Amazon Echo or Google Assistant, send destinations to the navigation system or receive reminders for meetings to make sure you arrive there on time.

M SPECIFIC HEAD-UP DISPLAY.

The full-colour BMW Head-Up Display² with M specific functions projects all information relevant for the journey directly into the driver's field of vision. With the press of a button, the driver can switch to the M specific display, which includes a gear indicator, the rpm as a dynamic range curve with shift lights indicating the optimal moment to shift as well as navigation tips.

IN THE BMW M5 SALOON.

*The availability of some equipment features and functions depends on engine variants or additional options. The market and production availability may vary. You can find detailed information about terms, standard and optional equipment at www.bmw.com or from your BMW Partner.

Some ConnectedDrive Services may differ between countries. Please consult your local BMW partner for more information.

BMW M5.

Discover even more with the new BMW brochures app. Available now, for your smartphone and tablet.

■ Standard equipment □ Optional equipment



Distinctive air inlets, a large kidney grille with double slats and a carbon roof echoing the contours of the bonnet underscore the dynamic proportions of the BMW M5 and provide an instant visual cue indicating the car's power.



The M-specific twin tailpipes and hallmark M gills hint at the powerful engine in the BMW M5.



■ The cockpit features red contrasts such as the M1 and M2 buttons on the M leather steering wheel, the Start/Stop button and the gear selector, providing added motor racing appeal in the interior. The M pedal system with foot support and knee pads ensures superior vehicle control.



□ 20" M light alloy wheels
Double-spoke style 706 M Black, burnished, with mixed-size tyres, front 9.5J x 20 with 275/35 R20 tyres, rear 10.5J x 20 with 285/35 R20 tyres.



□ The optional M multifunction seats for the driver and front passenger combine the comfort of a saloon seat with the appearance and functionality of a bucket seat as used in motor racing. The semi-integrated headrest can be adjusted for height. The illuminated M5 badge in the headrest features an electroplated surround and high-end glass finish for an exclusive appearance.



BMW M5 COMPETITION.

You can also increase top performance - the BMW M5 Competition. The engine power increased to 460 kW (625 PS), the stiffer engine mounts, the sporty direct steering and the specially developed Competition chassis, which is 7 mm lower than the standard, are fully designed for dynamics. The valve-operated, M sports exhaust system delivers either a particularly sporty or more low-key engine sound, depending on the driver's preference. The design is in no way inferior to all this: The forged 20" M light-alloy Y-spoke style 789 M wheels in bicolour look with mixed tyres, the black chrome-plated twin tailpipes of the M sports exhaust system and exclusive design elements such as the M rear spoiler and the high-gloss black rear apron offer pure racing feeling - in everyday use and on the race track.



The M multifunction seats¹ with electrically adjustable headrests are upholstered in full leather 'Merino' Aragon Brown with contrast stitching in Black and provide a sporty seating experience.²

¹ Available as optional equipment.

² Includes the leather instrument panel, upper side in leather Walknappa Black with contrast stitching and underside in leather 'Merino' according to the upholstery colour.

BMW INDIVIDUAL.

THE EXPRESSION OF PERSONALITY.



An elaborate finish ensures that the surface of the BMW Individual Frozen Arctic Grey metallic paintwork shimmers in a silky and matt way – exactly the right appearance for demonstrating personality and exclusive style with the new BMW M5.



Interior trim finishers in BMW Individual fine-wood trim Plum Brown high-gloss with highlight trim finisher Pearl Chrome turn the interior of the new BMW M5 into a completely unique visual and haptic experience.



Maximum performance, stylish appearance: The BMW Individual full leather trim 'Merino' Tartufo gets the pulse racing on every journey with its self-confident colour scheme and top material quality with particularly soft and breathable leather.

If someone decides, then you: BMW Individual offers you all the options to customise the BMW M5 according to your wishes, with the degree of customisation entirely up to you. Add your personal driving experience to the typical BMW driving pleasure. Choose what suits you the most from particularly high-quality equipment options: Exclusive BMW Individual paint finishes that show style and confidence. Soft, voluminous leather trims and interior trim finishers made of fine woods, which turn the interior into your personal comfort zone. Or go your very own way, only following your ideas – BMW Individual ensures that they become an automotive reality.

ADDITIONAL EQUIPMENT.

Discover even more with the new BMW brochures app. Available now, for your smartphone and tablet.

■ Standard equipment □ Optional equipment



■ BMW Individual high-gloss Shadow Line includes numerous equipment details in Black high-gloss: the side window frame trim strips, window recess finishers, B-pillars, window guides and mirror bases.¹



■ The M gills with model logo ensure optimal airflow around the wheel arches thanks to an integrated Air Breather. At the same time, the pronounced three-dimensional look underscores the M line's distinctive combination of technical perfection and breathtaking design.



□ The M Carbon ceramic brake² delivers braking power more directly. It is non-corrosive, very resistant to abrasion, tolerates more heat and contributes to a lower vehicle weight, which has a positive impact on agility, dynamics and acceleration. Matt Gold-coloured brake callipers with the M designation make this special technical equipment visible from outside the car.



■ The Adaptive LED headlights include BMW Selective Beam, cornering lights and adaptive headlights. The light colour is similar to daylight and provides an ideal, even illumination of the road to improve visibility and make driving in the dark less tiring. The iconic light design with four light elements makes the vehicle recognisable as a BMW even at night.



□ The M Driver's Package increases the top speed to 305 km/h. The M Driver's Package can be ordered when purchasing a new vehicle or can be added on at a later date. All other technical data remain unchanged once installed. This also includes a voucher for BMW M Intensive Training as part of BMW Driving Experience.³



■ 19" M light alloy wheels Double-spoke style 705 M Orbit Grey with mixed-size tyres, burnished, front 9.5J x 19 with 275/40 R19 tyres, rear 10.5J x 19 with 285/40 R19 tyres.



□ 20" M light alloy wheels Double-spoke style 706 M Jet Black with mixed tyres, front 9.5J x 20 with 275/35 R20 tyres, rear 10.5J x 20 with 285/35 R20 tyres.⁴



□ 20" M light alloy wheels Double-spoke style 706 M Black, burnished, with mixed-size tyres, front 9.5J x 20 with 275/35 R20 tyres, rear 10.5J x 20 with 285/35 R20 tyres.⁴



□ 20" M light alloy wheels Y-spoke style 789 M Bicolor⁵ with mixed tyres, wheel size front 9.5J x 20 with 275/35 R20 tyres, rear 10.5J x 20 with 285/35 R20 tyres.



□ Automatic tailgate operation allows the convenient opening and closing of the tailgate by simply pressing the button located in easy reach in the door panelling or on the car key. The tailgate can also be opened in the conventional manner, using the outside handle, and closed pressing a button on the inside of the tailgate.



□ The Comfort access system makes it possible to open all four vehicle doors, including the luggage compartment, without using the key. This equipment option includes contactless opening and closing of the tailgate⁶ with a quick wave of the foot under the rear bumper.

¹ In the BMW M5 Competition, the mirror caps, the BMW kidney, the M rear spoiler and the insert in the rear apron are also high-gloss black.

² Due to the nature of the material and according to situation and use, the functioning of the M Carbon Ceramic brakes may be audible, particularly when wet shortly before the vehicle comes to a standstill.

³ The raised top speed is only available after the first service following the 2,000 km run-in period.

⁴ Standard for BMW M5 Competition.

⁵ Only available in combination with BMW M5 Competition.

⁶ Contactless opening and closing of the tailgate only in combination with Automatic tailgate operation.

The Standard and Optional equipment may differ between countries. Please consult your local BMW partner for more information.

ADDITIONAL EQUIPMENT.

Discover even more with the new BMW brochures app. Available now, for your smartphone and tablet.

■ Standard equipment □ Optional equipment



□ The M Multifunction seats for the driver and front passenger in exclusive design with illuminated M5 logo reflect the vehicle's athletic look. Lower seat bases and high side bolsters emphasize the shell-seat look and guarantee flawless lateral support. Accompanied by a comprehensive range of adjustment possibilities, maximum comfort is achieved.



■ Dynamic and comfortable: The individually adjustable Sport seats for the driver and front passenger feature numerous electric adjustment options, including backrest width and seat height. Together with adjustable thigh support, the taller seat and backrest bolsters provide excellent ergonomics and more lateral support during fast cornering.



■ Ambient light creates a relaxed, cosy lighting atmosphere in the interior, and features vicinity illumination in the exterior door handles. There are eleven predefined light designs available in six different colours, with contour and ambient lighting on the instrument panel, door trim and centre console.



□ Exclusive ceramic applications on the volume and temperature controls for example lend a particularly high-quality look.



■ If the vehicle is fitted with the BMW Individual headliner anthracite, not only the headliner but also the trims on the roof pillars, sun visors and rear shelf are finished in Cloth anthracite.



■ The full-colour BMW Head-Up Display¹ with M specific functions projects all information relevant for the journey directly into the driver's field of vision. With the press of a button, the driver can switch to the M specific display, which includes a gear indicator, the rpm as a dynamic range curve with shift lights indicating the optimal moment to shift as well as navigation tips.



■ The BMW Live Cockpit Professional with navigation function includes two high-quality displays consisting of a high-resolution 10.25" Control Display that can be operated by touch and a fully digital 12.3" instrument display. The BMW Operating System 7.0 can also be operated via the iDrive Touch Controller.



□ The Automatic air conditioning with 4-zone control comes with the equipment included in Automatic air conditioning with 2-zone control with extended features, along with two air vents in the B columns. Additionally, the rear passengers can individually adjust their own climate via a separate control element with display.



□ The Massage function² for driver and passenger improves the physical wellbeing by stimulating or relaxing certain muscle groups. There are eight massage programmes dedicated to different parts of the body.



■ Automatic air conditioning with two-zone control allows the driver and front passenger to set separate air volume and temperature preferences. Includes rear air vents, microfilter, active carbon filter, Automatic Air Recirculation (AAR), fogging sensor, "maximum cooling" and auxiliary ventilation function.



■ The Double-spoke design M leather steering wheel includes multifunction buttons, the M emblem, chrome detailing, M1 and M2 buttons and an integrated driver-side airbag. Featuring a steering wheel rim in black leather with colour contrast stitching and contoured thumb rests, it feels great in the hand.

¹ The Standard and Optional equipment may differ between countries. Please consult your local BMW partner for more information.

¹ The information in the BMW Head-Up Display is not fully visible when viewed through polarised sunglasses. Content shown will depend on the equipment options chosen. Further optional equipment is required to display specific items.

² Only available in combination with M multifunctional seats and active front seat ventilation.

ADDITIONAL EQUIPMENT.

Discover even more with the new BMW brochures app. Available now, for your smartphone and tablet.



□ With BMW Gesture Control*, certain functions can be operated by means of defined hand movements. For certain operations the system will for example recognise gestures such as 'swiping' or 'pointing' for accepting or rejecting an incoming call, or circular motions of the index finger to adjust volume.



□ The Bowers & Wilkins Diamond surround sound system* with two diamond tweeters features outstanding studio-quality sound for every seat in the car. 16 carefully positioned speakers ensure a mesmerising sound experience. The speakers are illuminated, visually emphasizing the system's outstanding sound quality.



□ Using the BMW M laptimer app, driving data from the racetrack can be recorded accurately and then analysed. The recorded information can be shared as a snapshot on social media while the data, including accelerator position, steering angle, G-force and best lap time, can be sent by email. A GoPro interface is also incorporated.



□ With Remote 3D View, you can see your parked vehicle's surroundings from a distance on a smartphone. The function can be activated via the BMW Connected App (for iOS). It also enables you to save the 3D images on your smartphone.*



■ The High-beam assistant supports driving in the dark by automatically adjusting the headlights in response to oncoming traffic or vehicles up ahead.



□ The BMW Display Key shows various information about the vehicle's status and allows selected functions to be controlled with an integrated touch display.



□ Telephony with wireless charging¹ includes a wireless charging dock and additional USB ports. A roof aerial connection improves mobile reception. Two mobile telephones and an audio player can be connected simultaneously via Bluetooth. Also included are: Bluetooth Office and the technical capacity for a WiFi hotspot.

¹ Supports inductive charging for Qi-compatible mobile phones. Special charging cases are available from Original BMW Accessories for selected smartphones that do not support the Qi standard for inductive charging. The WiFi hotspot fulfils all in-vehicle requirements for use of the internet with the maximum LTE standard. Usage is subject to cost.

*The availability of some equipment features and functions depends on engine variants or additional options. The market and production availability may vary. You can find detailed information about terms, standard and optional equipment at www.bmw.com or from your BMW Partner.

BMW M PERFORMANCE PARTS.

Equipment 36 | 37



■ Standard equipment

□ Optional equipment

○ Accessories



○ The BMW M5 is now even sportier: BMW carbon front attachments enhance the car's masculine look. This is visually enhanced by the BMW M carbon sill attachment, which makes the appearance of the sports saloon even more dynamic. Last but not least, the exterior mirror caps, also made of carbon, set individual sporty accents and underline the absolute high-tech character of the BMW M5.



○ Show your style: The surrounds of the BMW M Performance front grille are made of 100 percent hand-crafted premium carbon fibre and the decorative slats consist of extra sturdy plastic. A visual highlight at the front of the vehicle for an especially elegant, sporty and individual look. With BMW M5 logo.



○ With corners and angles, it's perfectly well rounded: The BMW M Performance steering wheel creates that unmistakable motorsport atmosphere in the cockpit. Its striking shape is impressive, with motorsport band in red leather and an extremely distinctive Alcantara grip area.



○ Even more dynamic elegance and a more athletic look: The rear spoiler highlights the car's unique appearance and ensures optimised aerodynamic qualities. Made of 100 percent carbon fibre and painstakingly manufactured by hand.



○ A striking visual at the rear: The BMW M Performance carbon fibre rear diffuser underlines the car's exclusive athletic pedigree. With their chiselled look, the striking fins ensure that the car looks more dynamic and masculine than ever.

The Standard and Optional equipment may differ between countries. Please consult your local BMW partner for more information.

EXTERIOR COLOURS.

Discover even more with the new BMW brochures app. Available now, for your smartphone and tablet.

■ Standard equipment □ Optional equipment



■ Non-metallic 300 Alpine White



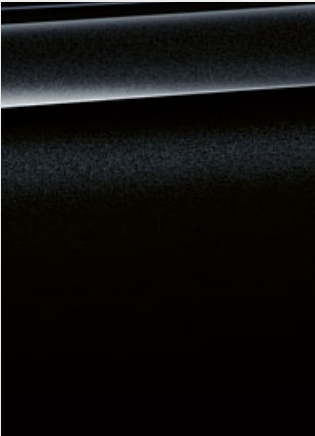
■ Metallic B41 Singapore Grey



■ Metallic C1K Marina Bay Blue



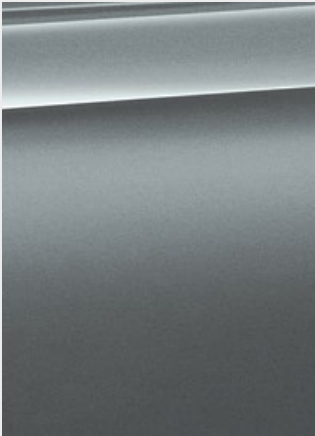
■ Metallic C1G Snapper Rocks Blue



■ Metallic 475 Sapphire Black



■ Metallic C28 Donington Grey



■ Metallic C2Y Bluestone

BMW INDIVIDUAL



□ BMW Individual 490 Frozen Arctic Grey metallic



□ BMW Individual 490 Frozen Dark Brown metallic



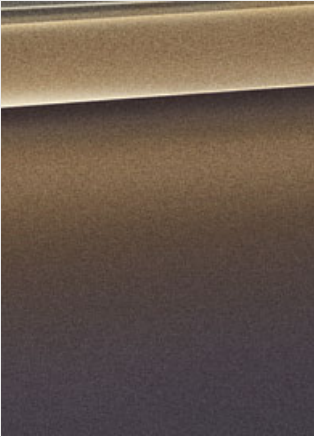
□ BMW Individual 490 Frozen Cashmere Silver metallic



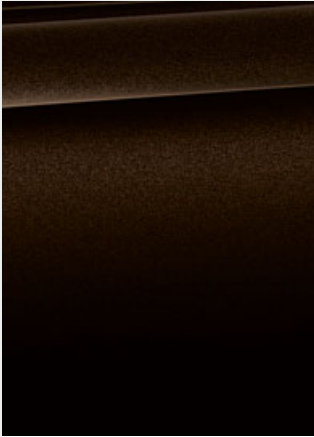
□ BMW Individual 490 Frozen Dark Silver metallic



□ BMW Individual 490 Frozen Brilliant White metallic



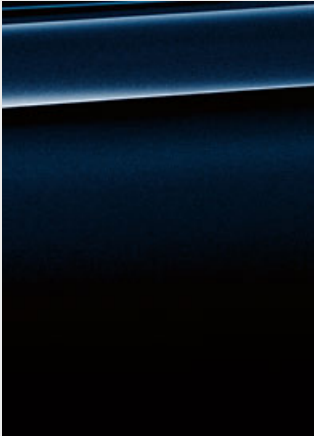
□ BMW Individual C48 Alvit Grey metallic



□ BMW Individual C46 Almandine Brown metallic



□ BMW Individual C4B Rhodonite Silver metallic



□ BMW Individual C47 Azurite Black metallic



□ BMW Individual 490 Brilliant White metallic



□ BMW Individual 490 Pure metal Silver



□ BMW Individual 490 Frozen Marina Bay Blue metallic

[Colour samples] These colour samples are intended as an initial guide to the colours and materials available for your BMW. However, experience has shown that printed versions of paint, upholstery and interior trim colours cannot in all cases faithfully reproduce the

appearance of the original colour. Please discuss your preferred colour choices with your BMW partner or dealership. There you can also see original samples and be assisted with special requests.

The Standard and Optional equipment may differ between countries. Please consult your local BMW partner for more information.

INTERIOR COLOURS.

Discover even more with the new BMW brochures app. Available now, for your smartphone and tablet.

■ Standard equipment □ Optional equipment



LEATHER



■ Leather 'Merino' with extended contents LKA9 Silverstone



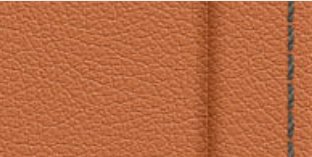
■ Leather 'Merino' with extended contents LKD8 Aragon Brown



■ Leather 'Merino' with extended contents LKSW Black



□ Full leather 'Merino' X3A9 Silverstone¹



□ Full leather 'Merino' X3D8 Aragon Brown¹



□ Full leather 'Merino' X3SW Black¹



INTERIOR TRIM



■ 4WN Interior trim finishers Aluminium Carbon Structure with highlight trim finisher Pearl Chrome



□ 4WM Interior trim finishers Aluminium Carbon Structure dark with highlight trim finisher Dark Chrome



■ 4LF Finline Ridge fine-wood trim with Pearl-Gloss Chrome accent line

BMW INDIVIDUAL



LEATHER



□ BMW Individual full leather trim 'Merino' ZBFU Smoke White¹



□ BMW Individual full leather trim 'Merino' ZBCR Caramel¹



□ BMW Individual full leather trim 'Merino' ZBTQ Tartufo¹

HEADLINER



■ BMW Individual headliner 775 Anthracite



□ BMW Individual headliner 776 Alcantara Anthracite

BMW INDIVIDUAL



INTERIOR TRIM



□ BMW Individual interior trim finisher 4WY Fine-wood trim Plum Brown high-gloss



□ BMW Individual interior trim finisher 4ML piano finish Black.



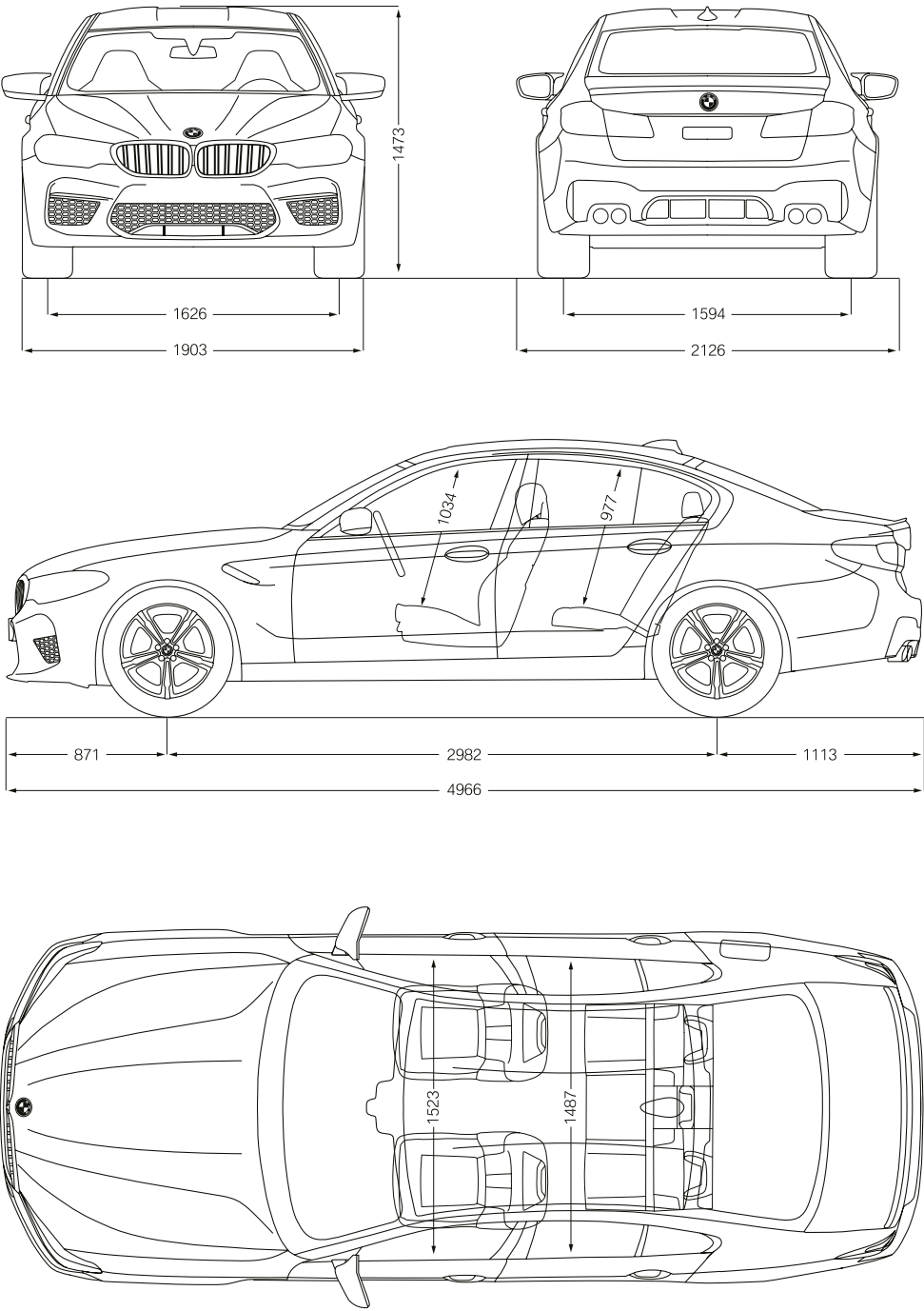
□ BMW Individual interior trim finisher XEW Fine-wood trim Sen Light Brown

Please note that even normal long or short-term use can lead to permanent upholstery damage. This can be caused in particular by non-colourfast clothing.

¹ Only available in combination with M multifunctional seats and active front seat ventilation.

The Standard and Optional equipment may differ between countries. Please consult your local BMW partner for more information.

		BMW M5	BMW M5 Competition
Weight			
Unladen weight EU ¹	kg	1950	1950
Maximum permissible weight	kg	2440	2440
Permitted load	kg	565	565
Permitted trailer load, unbraked ²	kg	750	750
Permitted trailer load, braked, max. 12% gradient/max. 8% gradient ²	kg	2000/2000	2000/2000
Luggage capacity	l	530	530
Engine⁴			
Cylinders/valves		8/4	8/4
Capacity	cm ³	4395	4395
Max. output/engine speed	kW (hp)/rpm	441 (600)/6000	460 (625)/6000
Max. torque/engine speed	Nm/rpm	750/1800–5600	750/1800–5860
Power transmission			
Type of drive		All-wheel	All-wheel
Standard transmission		8-speed M Steptronic	8-speed M Steptronic
Performance			
Top speed	km/h	250 ^{3,6}	250 ^{3,6}
Acceleration 0–100 km/h	s	3.4	3.3
Acceleration 0–200 km/h	s	11.1	10.8
Consumption^{4,5} – All engines conform to the EU6 standard			
Urban	l/100 km	14.5–14.7	14.4–14.8
Extra-urban	l/100 km	8.1–8.2	8.1
Combined	l/100 km	10.5–10.6	10.5–10.6
Exhaust emissions standard (type-certified)		EU6d-temp	EU6d-temp
Combined CO ₂ emissions	g/km	238–241	238–241
Tank capacity, approx.	l	68	68
Wheels/tyres			
Tyre dimensions		Front: 275/40 ZR 19 Y Rear: 285/40 ZR 19 Y	Front: 275/35 ZR 20 Y Rear: 285/35 ZR 20 Y
Wheel size		9.5J x 19 / 10.5J x 19	9.5J x 20 / 10.5J x 20
Material		Light alloy	Light alloy



All dimensions in the technical drawing are given in millimetres. Vehicle height of the BMW M5 Competition: 1469 mm. Front track width of the BMW M5 Competition: 1625 mm.

¹ The EC unladen weight refers to a vehicle with standard equipment and does not include any optional extras. The unladen weight includes a 90 % full tank and a driver weight of 75 kg. Optional equipment may affect the weight of the vehicle, the payload and the top speed if the selected equipment has an impact on the vehicle's aerodynamics.
² The actual total weight of the trailer must not exceed the maximum permitted trailer load, taking into account the maximum tow bar download.
³ Electronically limited.
⁴ Performance data of petrol engines apply to vehicles using RON 98 fuel. Fuel consumption data apply to vehicles using reference fuels in accordance with EU Regulation 2007/715. Unleaded RON 91 and higher with a maximum ethanol content of 10 % (E10) may also be used. BMW recommends RON 95 super unleaded petrol.
⁵ The data for fuel consumption, CO₂ emissions and energy consumption are determined in accordance with the measurement processes as defined by European Regulation (EC) 715/2007 in the applicable version. Data refer to a vehicle with base-level equipment in Germany, and the ranges account for differences according to the selected wheel and tyre size and the optional equipment and may change during the configuration process.
Figures have been determined on the basis of the new WLTP test cycle and have been converted back into NEDC figures for comparability. [For these vehicles, values other than those specified here may apply for the assessment of taxes and other vehicle-related charges that are (also) based on CO₂ emissions.]
⁶ In combination with M Driver's Package, the top speed is increased to 305 km/h.

BMW M5:

M TwinPower Turbo 8-cylinder petrol engine, 441 kW (600 hp), 20" M light alloy wheels Double-spoke style 706 M Black gloss-lathed with mixed tyres, exterior colour in Marina Bay Blue metallic, M multifunction seats for driver and front passenger with full leather trim 'Merino' Silverstone/Black, interior trim finishers Aluminium Carbon structure dark with highlight trim finisher Chrome dark.

BMW M5 Competition:

M TwinPower Turbo 8-cylinder petrol engine, 460 kW (625 hp), 20" M light alloy wheels Y-spoke style 789 M Bicolour with mixed tyres, exterior colour in BMW Individual Frozen Dark Silver metallic, M multifunction seats for driver and front passenger in full leather trim 'Merino' finely structured Aragon Brown, interior trim finishers Aluminium Carbon structure dark with highlight trim finisher Chrome dark.

The models illustrated in this brochure show the equipment and configuration options (standard and optional) for vehicles produced by BMW AG for the German market. Alterations in standard and optional equipment and the configurations available for the different models, as described in this brochure, may occur after 03/18/2019, the date when this brochure went to press, or according to the specific requirements of other markets. Your local BMW Partner is available to provide further details. Subject to change in design and equipment.

© BMW AG, Munich, Germany. Reproduction, even in part, only with the written approval of BMW AG, Munich.